



APPLICATION:

Plastic pipes Through Slab

ID:

**CP638:
MP-RF-M-01**

INFORMATION:

- Not to scale
- All units are in millimetres
- Tested according to EN 1366-3
- Classification Report 23003B

CP 638 Mortar + CFS-C EL

REV:

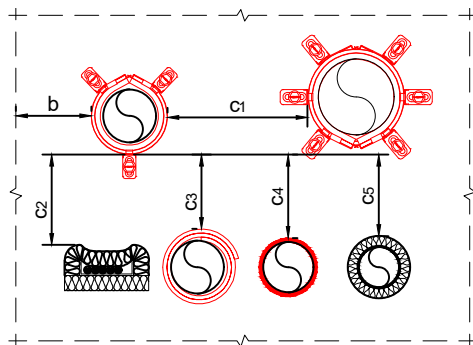
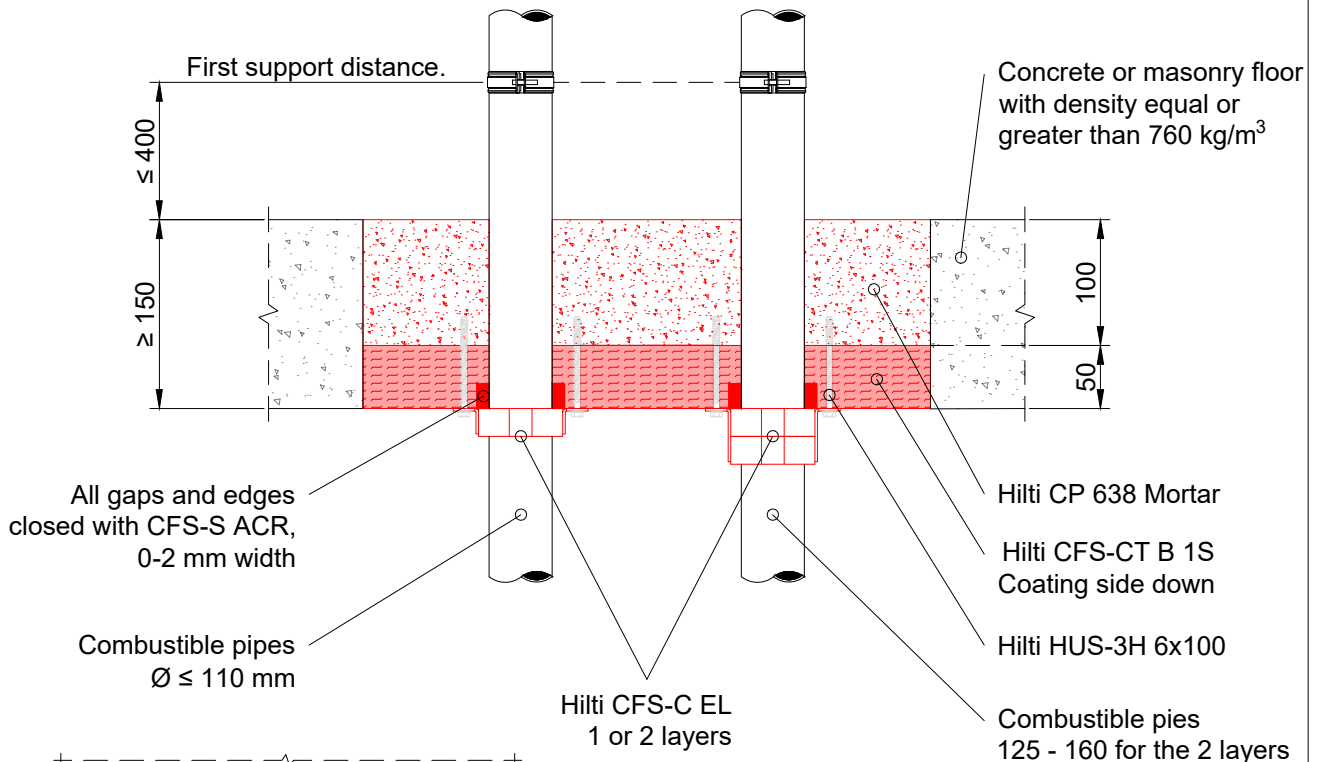
DATE:

02

05/2025

Fire Rating EI 120

Page 1/1



Spacing overview for mixed seals		
Description	Shortcut	Distance
To seal edge	b	≥ 50 mm
To other pipes with CFS-C EL	c ₁	≥ 38 mm
To cables with CFS-IS	c ₂	≥ 0 mm
To pipes with CFS-B	c ₃	≥ 0 mm
To pipes with CFS-S ACR	c ₄	≥ 0 mm
To any other services	c ₅	≥ 100 mm

PE pipes in acc. EN 1519-1, EN 12201-1, EN 15494, EN 12666-1, PE-X pipes in acc. EN 15875-2, ABS pipes in acc. EN 1455-1 and EN 15493, as well as SAN+PVC in acc. ISO 19220.

Number of layers	Hooks	Diameter	Wall thickness	Fire rating in mixed opening
1	3	≤ 75 to 90 to 110 mm	3 to 3.7 to 4.2	EI 120-U/U
2	4	≤ 125 to 160 mm	4.9 to 6.2 to 9.5	EI 120-U/U

PVC pipes in acc. EN 1329-1, EN 1453-1, EN 15493, EN 1452-2.

Number of layers	Hooks	Diameter	Wall thickness	Fire rating in mixed opening
1	3	≤ 40 to 110 mm	1.9 to 2.7 to 6.6	EI 120-U/U
2	4	≤ 160 mm	6.2 to 9.5	EI 120-U/U

Maximum opening size without additional support:
2000 x 1800 mm or reduced width, with up-to 10m length.
See classification report for further details.

1. The application limits on this detail are for guidance purposes only. For more detailed information based on the full range of available test results please contact the Hilti Technical Advisory Service.
2. The product and application has been assessed as a minimum to the BS 476 standard. It may have additional European and worldwide testing. Please contact Hilti for further information.
3. All installations should be carried out in accordance with Hilti's installation instructions and by competent & experienced installers using Hilti branded products.
4. All services are to be correctly and adequately supported to prevent collapse and distortion.