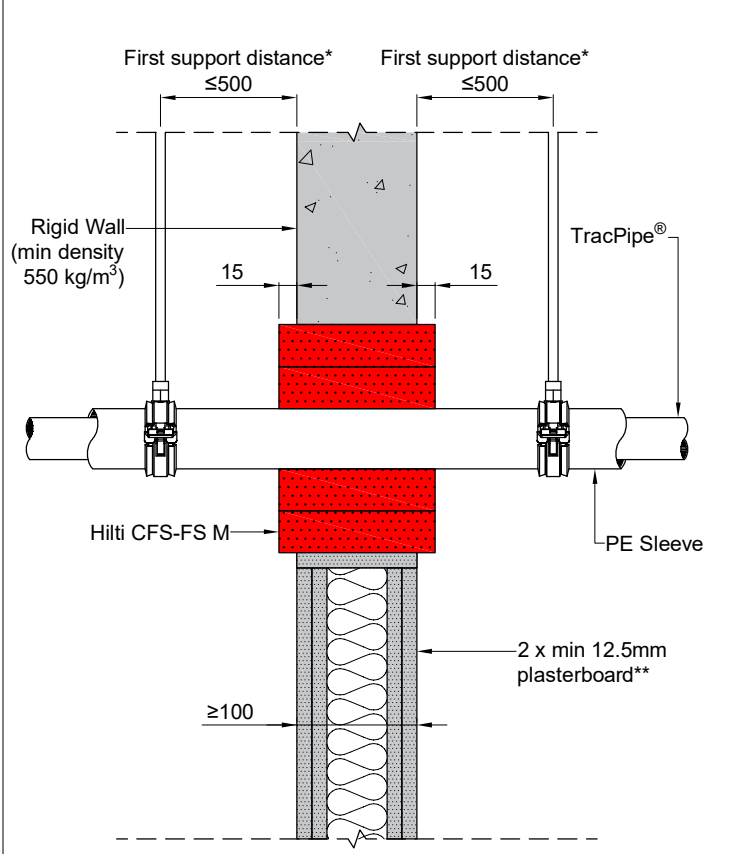
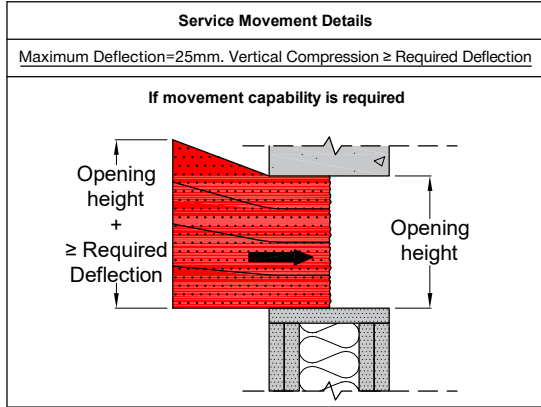
	APPLICATION:  <h1>TracPipe®</h1>	ID:  <h1>CFS-FS: 14</h1>	
<b>INFORMATION:</b> - Not to scale - All units are in millimetres - Tested according EN 1366-3 - Classification No. 23581B	<h2>CFS-FS M Flexible Seal</h2>	REV: <h2>02</h2>	DATE: <h2>04/2025</h2>
	<h2>Fire Rating up to EI 60</h2>	<h2>Page 1/1</h2>	



Acoustics rating:  $R_w = 50$   
 Maximum opening dimensions: 1200x500mm. For blank openings see approval documents.  
 \*First support and ancillary products should be capable of achieving the same fire performance as the seal and supporting structure.  
 \*\*Comprising timber or steel studs. Wall construction itself has been classified according to EN 13501-2.

TracPipe®				
Material	Diameter (Min. Wall Thickness) [mm]	Wave Height [mm]	Outer Diameter of PE Sleeve (Length) [mm] ‡	Classification
TracPipe® CC	31 (0.25)	5	40 (132)	EI 60 (C/U)
	38 (0.25)	5.5	50 (132)	
	45 (0.25)	6	56 (132)	
	52 (0.25)	6	60 (132)	
TracPipe®	28 (0.25)	3.5	40 (132)	
	35 (0.25)	4	50 (132)	
	42 (0.3)	4.5	56 (132)	
	49 (0.3)	4.5	60 (132)	
‡Space between TracPipe and PE Sleeve must be filled with CFS-FIL with a minimum depth of 25mm. PE Sleeve wall thickness = 3mm				



Ref.	Service Type (See service standard detail for more specific information)	Distance (mm) †
b <sub>1</sub>	To top of opening	≥70 ††
b <sub>2</sub>	To side of opening	≥30 ††
b <sub>3</sub>	To bottom of opening	≥35 ††
C <sub>1</sub>	To metal pipe w/ mineral wool insulation	≥30
C <sub>2</sub>	To metal pipe w/ combustible insulation	≥30
C <sub>3</sub>	To cables/cable bundles/cable carriers	≥30 †††
C <sub>4</sub>	To cable trunking w/ mineral wool insulation	≥30
C <sub>5</sub>	To combustible plastic pipe w/ <a href="#">Hilti CFS-B</a>	≥30
C <sub>6</sub>	To MLC (Aluminium composite) pipe w/ or w/o insulation	≥50
C <sub>7</sub>	To rectangular PVC Duct w/ <a href="#">Hilti CFS-B</a>	≥30
C <sub>8</sub>	To ClimaSplit bundle or TracPipe®	≥50
C <sub>9</sub>	To CPVC	≥30
C <sub>10</sub>	To combustible plastic pipe & conduit w/o addn. protection	≥50
C <sub>11</sub>	To conduit w/ <a href="#">Hilti CFS-B</a>	≥30

†All distance values can be horizontal, vertical or diagonal.  
 ††b<sub>1</sub>, b<sub>2</sub>, b<sub>3</sub> = 30mm if no movement is required.  
 †††For cables d > 21mm, a min distance of 100mm from other services is required.

