



APPLICATION:

**Back-to-Back Plastic Electrical
Back Box**

ID:

CP617:SP-FW-E-01**INFORMATION:**

- Not to scale
- All units are in millimetres
- Tested to
EN 1366-3:2021
- Classification Report:
FIRES-CR-059-24-AUPE Edition 2

CP 617 putty pads

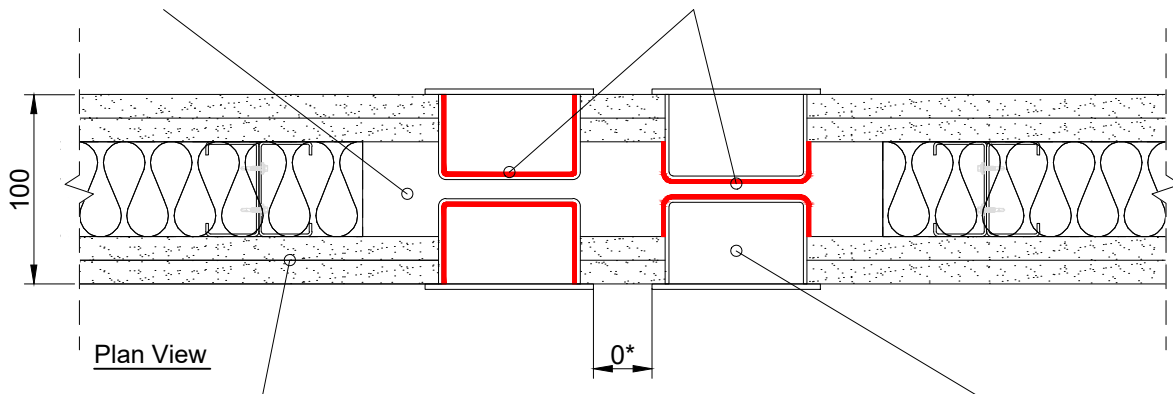
REV:

DATE:

01**01/2025****Fire Rating up to EI90****Page 1/1**

The electrical sockets does not
require aperture framing.

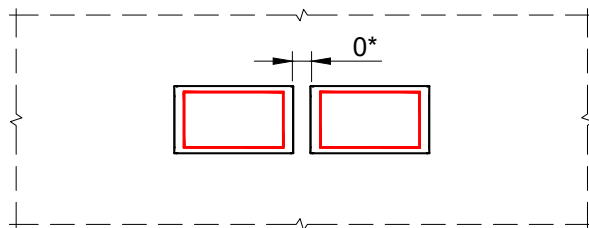
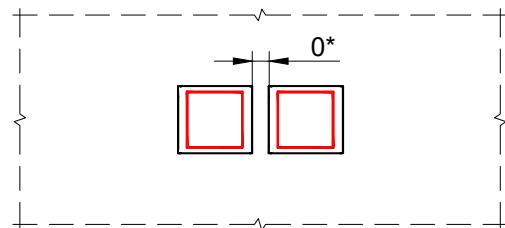
Hilti CP-617 Intumescent Putty Pad located inside
or outside electrical back box socket.



Min. 100 mm comprising timber or steel studs, lined
on both faces with min. 2 layers min. 12.5 mm thick
board. Construction classified to EN 13501-2.
Aperture framing is not required

Combustible electrical back box socket ≤ 135 mm
x 75 mm:

Electrical back box socket Centaur® CDLB1-47 and CDLB2-47
Electrical sockets Volex VX1300 and VX1500

**Front View - Double****Front View - Single****Notes:**

Min. 100 mm to other penetrations seals apertures.

- Tested height double back to back sockets: 200 & 2725 mm
- Tested height single back to back sockets: 200 & 2000 & 2725 mm

The results of the test of a 'standard' plastic socket cover metallic sockets and face plates for Integrity only.

The test results are valid for any electrical socket box size within a linear arrangement with equal to or smaller height, width, and diameter than those tested, whether with or without services, provided that:

- The distances between services, as well as between services and the aperture edge, meet or exceed the minimum required distances specified above.
- For all minimum distance requirements, including a 0 mm separation (the smallest possible installation distance between two electrical sockets), the classification is limited to:
 - EI 90 for single electrical back box socket (≤ 75 x 75) mm.
 - EI 60 for double electrical back box socket (≤ 135 x 75) mm.

1. The application limits on this detail are for guidance purposes only. For more detailed information based on the full range of available test results please contact the Hilti Technical Advisory Service.

2. The product and application has been assessed as a minimum to the BS 476 standard. It may have additional European and worldwide testing. Please contact Hilti for further information.

3. All installations should be carried out in accordance with Hilti's installation instructions and by competent & experienced installers using Hilti branded products.

4. All services are to be correctly and adequately supported to prevent collapse and distortion.

Hilti (Gt. Britain) Limited | No 1, Circle Square | 3 Symphony Park | Manchester | M1 7FS

Freephone: 0800 886 100 | Website: www.hilti.co.uk